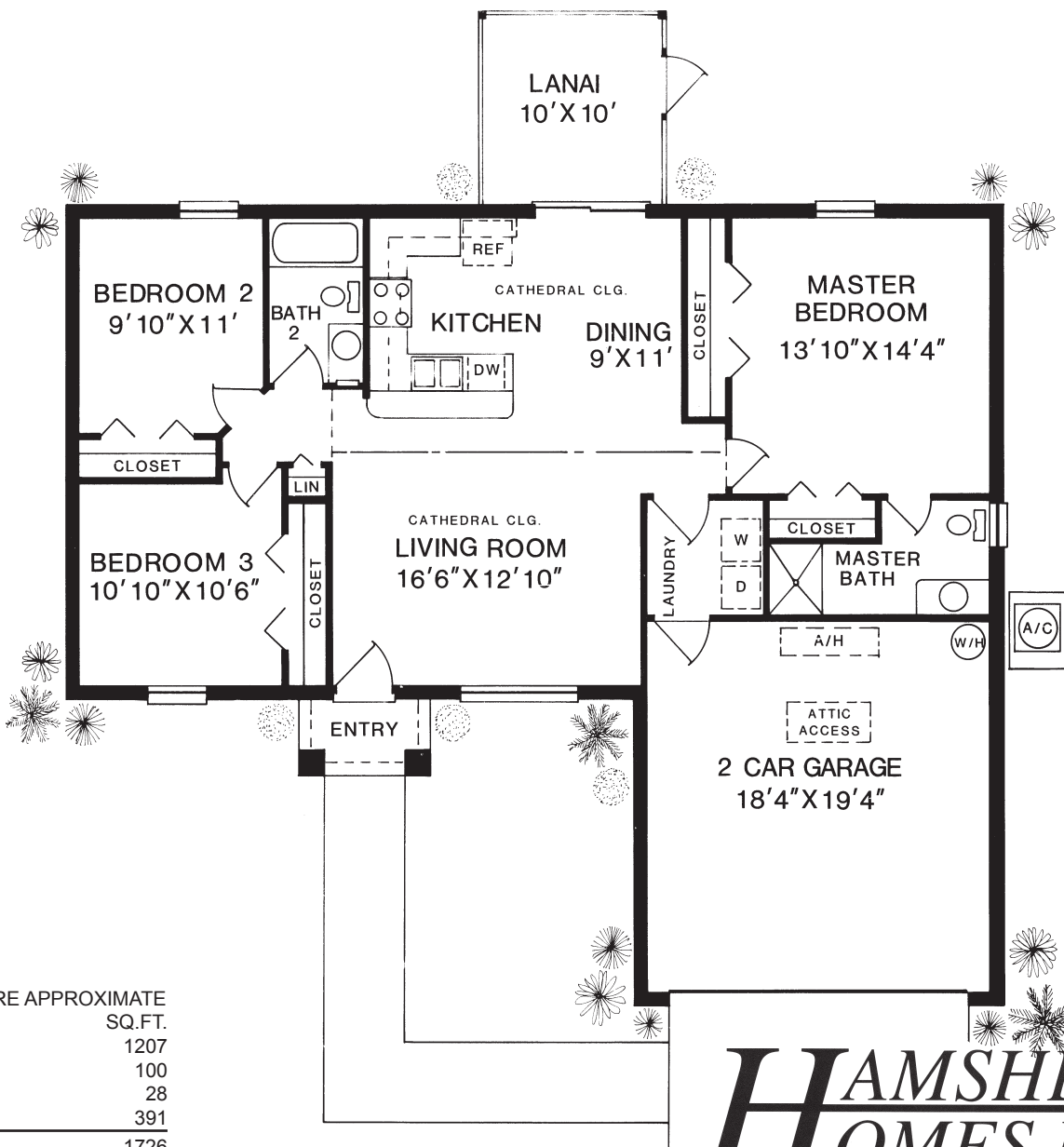


THE MAYFLOWER I



ALL SIZES ARE APPROXIMATE

AREA	SQ. FT.
LIVING	1207
LANAI	100
ENTRY	28
GARAGE	391
TOTAL	1726

HAMSHER HOMES INC.

North Port Model (941) 426-0671
 South Gulf Cove Model (941) 697-9225



STANDARD FEATURES FOR THE MAYFLOWER I

- * Full 1 Year Warranty
- * 10 Year Structural Warranty
- * Concrete Block Construction
- * Engineered Roof Trusses
- * Monolithic Concrete Slab with Reinforced Footings
- * Reinforced Concrete Slab with Vapor Barrier
- * 2" x 4" Wood Studs, 16" on Center
- * Aluminum Soffit and Facia
- * 16" Overhangs
- * Plywood Roof Sheathing
- * 30 Year Dimensional Shingles
- * Ridge Venting on Roof
- * Insulated Steel Entry Door
- * Full Screened Lanai Under Truss
- * Single Hung White Aluminum Windows
- * Single Hung White Aluminum Windows
- * Marble Interior Sills
- * Finished Garage Interior Walls
- * Steel Garage Overhead Door
- * Pre-Wired for Garage Door Opener
- * Concrete Driveway and Walk (700 sq. ft.)
- * 24" (18" x 12") Concrete Driveway Culvert
- * Flooring Allowance \$12.00 per Yd.
- * Upgraded Door Hardware
- * Vinyl Coated Closet Shelving
- * Inside Laundry Room
- * Washer and Dryer Hook-ups
- * Dryer Vented to Outside
- * R-30 Insulated Ceilings in A/C Areas
- * 3/4" Thermax Insulation on Block Walls
- * Satin Paint on Walls
- * 1/2" Drywall Ceilings and Walls with Knock Down Texture
- * 3 1/4" Colonial Baseboards, Raised Panel Interior Doors
- * Marble Vanity Tops in Bathrooms
- * Mica Medicine Cabinets to Match Cabinetry
- * Full Mirrors Over Vanities
- * Fiberglass Tub/Shower Units in Bathrooms
- * CPVC Overhead Plumbing
- * Moen Plumbing Fixtures
- * 40 Gallon Hot Water Heater
- * 2 Exterior Hose Bibs
- * Water Softener and Aerator (included with well lot prep. only)
- * 200 Amp Electrical Service
- * Lighting Allowance \$200
- * Door Chime
- * 2 TV Outlets
- * 2 Telephone Outlets
- * 2 Exterior Waterproof Electric Outlets
- * Smoke Detectors as per Code
- * Pre-wired for Ceiling Fans
- * High Efficiency Heat Pump
- * Return Air Ducts in all Bedrooms
- * Custom Built Mica Cabinetry
- * Dishwasher
- * Smooth-top Range with Self Cleaning Oven
- * Microwave Vented to Outside
- * Stainless Steel Kitchen Sink
- * Water Line to Icemaker
- * Stucco on Exterior Walls with Painted Finish
- * Sod Allowance (8,000 sq. ft.)
- * Whole House Termite Prevention
- * Storm Panel Allowance